

Pneumatic & Hydraulic Linkages



Pneumatic & Hydraulic Linkages

- Gas Couplings

Introduction

Series GC coupling are ideally suitable for applications where gas or fluid lines are to be connected / disconnected frequently and under pressures, where leakage rates have to be minimal, where extremely low media loss is permissible on disconnection, where usable life under adverse and hostile conditions without any deterioration is a must. One such application is SF 6 Circuit Breakers in the Switchgear Industry.

Features

Series GC couplings are, in fact, two check valves. These valves open on connection (mating) and close on disconnection. The Coupling is connected by tightening of one nut. After tightening two threads, check valves start opening. At this point, the 'O' Ring seal has already become operative. Full tightening is done with a specified torque. Disconnection is a reverse procedure. Besides the 'O' ring seal in series, there is a special profile metal to metal seal (non deteriorating).

- ▶ Ease of connection, disconnection eliminating use of any sealant / sealant tape
- ▶ Automatic shut off for both sides on disconnection
- ▶ Connection / disconnection possible under pressurized condition
- ▶ Specially designed metal sealing (non deteriorating)
- ▶ Higher the pressure, more effective the sealing
- ▶ Three way sealing ensures leak proofness

Standard Materials

| | |
|---------------------------|--------------------------------------|
| Coupling Body | Stainless Steel, Aluminium, Brass |
| Coupling Sealing Elements | Metal to Metal Seal, EPDM / Neoprene |
| Coupling Springs | Stainless Steel |
| Coupling Check Valves | Brass / Stainless steel |

Specifications

| | | | |
|---------------------|-------------------------|---------------|---------------------------------------|
| Working Pressure | : 10 kg/cm ² | Test Pressure | : 0.5/1.5/7.0/15.0 kg/cm ² |
| Working Temperature | : -40 to +80°C | Leakage Rate | : 1 gm SF6 gas per annum |

Accessories

Covering Caps, Gauge Connector, Brazing Unions, Non Return Valve, Reducers for male and female coupling

Technical & Safety Information

Customized solutions for mounting are available. Contact factory with details regarding mounting required, mounting dimensions and other relevant information. Prices available on request.

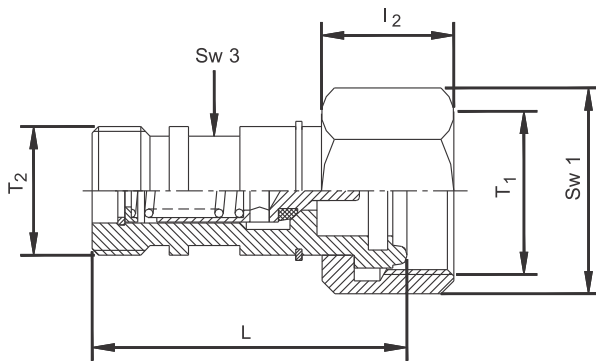
Special valves and fittings can be manufactured as per requirements. Contact factory with details regarding flow parameters, mounting dimensions and other relevant information. Prices available on request.

Some options may be available only by special quotation. Some parts may be subject to minimum order quantities.

Pneumatic & Hydraulic Linkages

- Gas Couplings

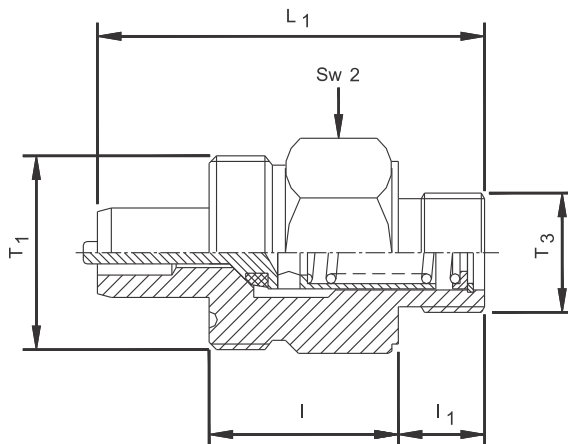
Female Part



| Product Code | L mm | I ₂ mm | T ₁ Thread | T ₂ Thread | Sw 1 (Hex) mm | Sw 3 (A/F) mm |
|--------------|---------|----------------------|--------------------------|--------------------------|---------------------|---------------------|
| GC-01-8-F | 49.00 | 20.50 | M26 x 1.5 | M20 x 1.5 | A/F 32.0 | A/F 17.00 |
| GC-01-20-F | 69.00 | 30.00 | M45 x 2.0 | M36 x 2 | A/F 50.8 | A/F 32.00 |

All dimensions in mm unless specified otherwise

Male Part



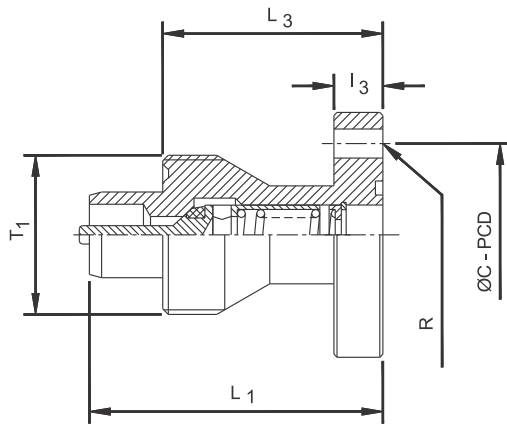
| Product Code | L ₁ mm | I mm | I ₁ mm | T ₁ Thread | T ₃ Thread | Sw 2 (Hex) mm |
|--------------|----------------------|---------|----------------------|--------------------------|--------------------------|---------------------|
| GC-01-8-M | 48.00 | 24.00 | 12.00 | M26 x 1.5 | M16 x 1.5 | A/F 27.0 |
| GC-01-20-M | 65.00 | 31.00 | 18.00 | M45 x 2.0 | 1" BSP | A/F 50.8 |

All dimensions in mm unless specified otherwise

Pneumatic & Hydraulic Linkages

- Gas Couplings

Male Flange Part



| Product Code | R No. Of Holes | L ₁ mm | L ₃ mm | I ₃ mm | T ₁ Thread | C mm | Mounting Flange Type | Size mm |
|--------------|----------------|-------------------|-------------------|-------------------|-----------------------|-------|----------------------|---------|
| GC-01-8-MR | 3 | 48.00 | 36.00 | 8.00 | M26 x 1.5 | 29.00 | Round | 40.00 |
| GC-01-20-MR | 4 | 65.00 | 49.00 | 12.00 | M45 x 2.0 | 44.00 | Round | 59.00 |

All dimensions in mm unless specified otherwise